



SPECTRUM

SYSTEMENTWICKLUNG MICROELECTRONIC GMBH

M3i.48xx - 16 bit transient recorder up to 180 MS/s

- Up to 180 MS/s on one or two channels
- Simultaneously sampling on all channels
- Separate monolithic ADC and amplifier per channel
- 6 input ranges: ± 200 mV up to ± 10 V
- Up to 2 GSample (4 GByte) on-board memory
- 128 MSample standard memory installed
- Window, re-arm, OR/AND trigger
- Synchronization of up to 8 cards per system
- Options: Multiple Recording, Timestamps

Speed	SNR	ENOB
65 MS/s	up to 75.4 dB	up to 12.2 LSB
105 MS/s	up to 74.7 dB	up to 12.1 LSB
180 MS/s	up to 73.4 dB	up to 11.9 LSB



PCI / PCI-X



PCI EXPRESS

- | | |
|---|--|
| <ul style="list-style-type: none"> • 66 MHz 32 bit PCI-X interface • 5V / 3.3V PCI compatible • 100% compatible to conventional PCI > V2.1 • Sustained streaming mode up to 245 MB/s | <ul style="list-style-type: none"> • 2,5 GBit x1 PCIe Interface • Works with x1/x4/x8/x16* PCIe slots • Software compatible to PCI • Sustained streaming mode up to 160 MB/s |
|---|--|

<u>Operating Systems</u>	<u>Recommended Software</u>	<u>Drivers</u>
<ul style="list-style-type: none"> • Windows 2k, XP, Vista, 7 • Linux Kernel 2.4 + 2.6 • Windows/Linux 32 and 64 bit 	<ul style="list-style-type: none"> • Visual Basic, Visual C++, Borland C++ Builder, GNU C++, Borland Delphi, VB.NET, C#, J#, Python • SBench 6 	<ul style="list-style-type: none"> • MATLAB • LabVIEW • LabWindows/CVI • Agilent VEE

Model	1 channel	2 channels
M3i.4830	65 MS/s	
M3i.4831	65 MS/s	65 MS/s
M3i.4840	105 MS/s	
M3i.4841	105 MS/s	105 MS/s
M3i.4860	180 MS/s	
M3i.4861	180 MS/s	180 MS/s

General Information

The 6 models of the M3i.48xx series are designed for the fast and high quality data acquisition. Each of the input channels has its own monolithic A/D converter and its own programmable input amplifier. This allows to record signals simultaneously on both channels with 16 bit resolution without any phase delay between them. The extremely large on-board memory allows long time recording even with the highest sampling rates. All boards of the M3i.48xx series may use the whole installed on-board memory for the currently activated number of channels. A FIFO mode is also integrated on the board. This allows the acquisition of data continuously for online processing or for data storage to hard disk.

*Some x16 PCIe slots are for the use of graphic cards only and can not be used for other cards.

Software Support

Windows drivers

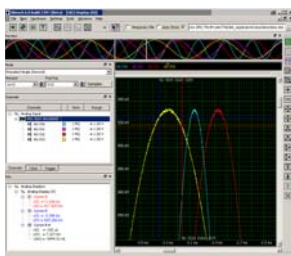
The cards are delivered with drivers for Windows 2000, XP, XP64, Vista and Vista64 as well as Windows 7. Programming examples for Visual C++, Borland C++ Builder, LabWindows/CVI, Borland Delphi, Visual Basic, VB.NET, C# and J# are included.

Linux Drivers



All cards are delivered with full Linux support. Pre compiled kernel modules are included for the most common distributions like RedHat, Fedora, Suse or Debian. The Linux support includes SMP systems, 32 bit and 64 bit systems, versatile programming examples for Gnu C++ as well as the possibility to get the driver sources for own compilation.

SBench 6



A base licence of SBench 6 the easy-to-use graphical operating software for the Spectrum cards is included in the delivery. Using the base license it is possible to test the card and to show acquired data. There are also some basic measurement functions included in the base license. The card comes with a demo license for the professional version giving the user the opportunity to test the features of the professional version with the new hardware. Existing customers have the opportunity to request a demo license for the professional version at Spectrum. The professional version contains several new measurement functions, FFT, import and export (including MATLAB and ASCII) as well as the streaming modes. The data streaming modes allow to continuously acquire data to hard disk. SBench 6 has been optimized to handle data files of several GByte. More details on SBench 6 are found in the dedicated SBench 6 data sheet. The version 6 is running under Windows as well as under Linux (KDE and GNOME). A test version of SBench 6 is freely available in the internet. This test version will also operate with demo cards and can be tested as Professional version without any hardware installed.

Third-party products

A lot of third-party products are supported as an option. Choose between LabVIEW, MATLAB and Agilent VEE. All drivers come with examples and detailed documentation.

Hardware features and options

PCI/PCI-X



The cards with PCI/PCI-X bus connector use 32 Bit and up to 66 MHz clock rate for data transfer. They are 100% compatible to Conventional PCI > V2.1. The universal interface allows the use in PCI slots with 5 V I/O and 3.3 V I/O voltages as well as in PCI-

X or PCI 64 slots. The maximum sustained data transfer rate is 245 MByte/s per bus segment.

PCI Express



The cards with PCI Express use a x1 PCIe connector. They can be used in PCI Express x1/x4/x8/x16 slots, except special graphic card slots, and are 100% software compatible to

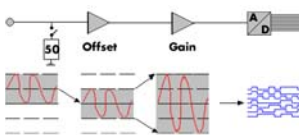
Conventional PCI > V2.1. The maximum sustained data transfer rate is 160 MByte/s per slot.

SMA connectors



As an alternative to the standard SMB and MMCX connections the card can also be equipped with SMA connectors. The SMA connections are available for the analog input signals as well as for two of the additional connections. These connections must be defined on the purchase order and can be a selection of: Trig-In, Trig-Out, Multi-Purpose X0, Clk-In, Clk-Out.

Input Amplifier



The analog inputs can be adapted to real world signals using a wide variety of settings that are individual for each channel. By using software commands the input termination can be changed between 50 Ohm and 1 MOhm, one can select a matching input range and the signal offset can be compensated by programmable AC coupling.

Software selectable input path

For each of the analog channels the user has the choice between two analog input paths. The „Buffered“ path offers the highest flexibility when it comes to input ranges and termination. A software programmable 50 Ohm and 1 MOhm termination also allows to connect standard oscilloscope probes to the card. The „50 Ohm“ path on the other hand provides the highest bandwidth and the best signal integrity with a fewer number of input ranges and a fixed 50 Ohm termination.

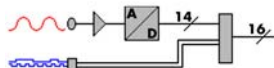
Software selectable lowpass filter

Each analog channel contains a software selectable low-pass filter to limit the input bandwidth. Reducing the analog input bandwidth results in a lower total noise and can be useful especially with low voltage input signals.

Automatic on-board calibration

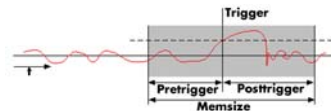
All of the channels are calibrated in factory before the board is shipped. To compensate for different variations like PC power supply, temperature and aging, the software driver provides routines for an automatic onboard offset and gain calibration of all input ranges of the „Buffered“ path. All the cards contain a high precision on-board calibration reference.

Digital inputs



This option acquires additional synchronous digital channels phase-stable with the analog data. A maximum of 2 additional digital inputs are available on the front plate of the card using the multi-purpose I/O lines.

Ring buffer mode



The ring buffer mode is the standard mode of all oscilloscope boards. Data is written in a ring memory of the board until a trigger event is detected. After the event the posttrigger values are recorded. Because of this continuously recording into a ring buffer there are also samples prior to the trigger event visible: Pretrigger = Memsize - Posttrigger.

FIFO mode

The FIFO mode is designed for continuous data transfer between measurement board and PC memory (up to 245 MB/s on a PCI-X

slot, up to 125 MB/s on a PCI slot and up to 160 MB/s on a PCIe slot) or hard disk. The control of the data stream is done automatically by the driver on interrupt request. The complete installed on-board memory is used for buffer data, making the continuous streaming extremely reliable.

Channel trigger

The data acquisition boards offer a wide variety of trigger modes. Besides the standard signal checking for level and edge as known from oscilloscopes it's also possible to define a window trigger. All trigger modes can be combined with a re-arming mode (for accurate trigger recognition on noisy signals) the AND/OR conjunction of different trigger events is possible.

External trigger input

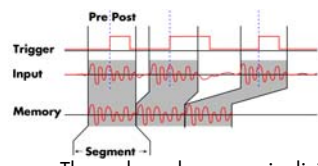
All boards can be triggered using an external analog or digital signal. It's possible to use positive or negative edge. As two analog comparators are used, one can also define a window trigger, a hysteresis trigger or a re-arm trigger.

Universal Multi-Purpose I/Os



All M3i cards offer two universal multi-purpose I/O lines, which can be separately programmed as either input or output. These lines can be used as additional TTL trigger inputs for more complex trigger conditions. When used as outputs, these lines can be used to output card status signals like trigger-armed or to output the trigger to synchronize external equipment.

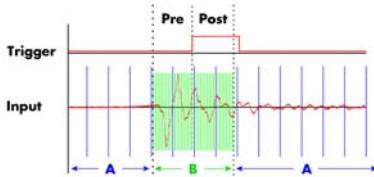
Multiple Recording



The Multiple Recording option allows the recording of several trigger events with an extremely short re-arming time. The hardware doesn't need to be restarted in between.

The on-board memory is divided in several segments of the same size. Each of them is filled with data if a trigger event occurs. Pre- and posttrigger of the segments can be programmed. The number of acquired segments is only limited by the used memory and is unlimited when using FIFO mode.

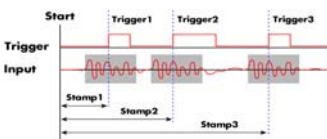
ABA mode



The optional ABA mode combines slow continuous data recording with fast acquisition on trigger events. The ABA mode works like a slow data logger combined with a fast digitizer. The exact position of the trigger events is stored as timestamps in an extra memory.

The exact position of the trigger events is stored as timestamps in an extra memory.

Timestamp



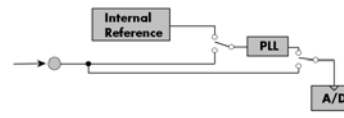
The timestamp option writes the time positions of the trigger events in an extra memory. The timestamps are relative to the start of recording, a defined zero time, externally synchronised to a radio clock, or a GPS receiver. With this option acquisitions of systems on different locations can be set in a precise time relation.

With this option acquisitions of systems on different locations can be set in a precise time relation.

External clock input and output

Using a dedicated connector a sampling clock can be fed in from an external system. Additionally it's also possible to output the internally used sampling clock on a separate connector to synchronize external equipment to this clock.

Reference clock



The option to use a precise external reference clock (normally 10 MHz) is necessary to synchronize the board for high-quality measurements with external equipment (like a signal source). It's also possible to enhance the quality of the sampling clock in this way. The driver automatically generates the requested sampling clock from the fed in reference clock.

Star-Hub



The star-hub is an additional module allowing the phase stable synchronisation of up to 8 boards of a kind in one system. Independent of the number of boards there is no phase delay between all channels. The star-hub distributes trigger and clock information between all boards. As a result all connected boards are running with the same clock and the same trigger. All trigger sources can be combined with a logical OR allowing all channels of all cards to be trigger source at the same time.

BaseXIO (enhanced timestamps)



The BaseXIO option offers 8 asynchronous digital I/O lines on the base card, which are available on a separate bracket as SMB connectors. The direction can be selected by software in groups of four.

In addition one of the I/O lines can be used as reference clock for the Timestamp counter.

External Amplifiers



For the acquisition of extremely small voltage levels with a high bandwidth a series of external amplifiers is available. Each of the one channel amplifiers is working with a fixed input impedance and allows - depending on the bandwidth - to select different amplification levels between x10 (20 dB) up to

x1000 (60 dB). Using the external amplifiers of the SPA series voltage levels in the uV and mV area can be acquired.

Technical Data

Analog Inputs

Resolution	16 bit
Differential non linearity (DNL)	±1 LSB (ADC only)
Integral non linearity (INL)	±4 LSB (ADC only)
Programmable input offset	not available
Connector (analog inputs)	3 mm SMB male
Crosstalk sine signal ±1V @ 1 MOhm	1 MHz: < -100 dB, 20 MHz: < -100 dB
Crosstalk sine signal ±5V @ 1 MOhm	1 MHz: < -92 dB, 20 MHz: < -92 dB
Crosstalk sine signal ±5V @ 50 Ohm	1 MHz: < -110 dB, 20 MHz: < -102 dB
20 MHz BW Filter Characteristics	3rd order Butterworth

Input Path

	50 ohm path 1	Buffered path 0
Input impedance	fixed 50 Ohm	50 Ohm, 1 MOhm 25 pF
Max input @ 50 Ohm (> ±1 V range)	6 Vrms	5 Vrms
Max input @ 50 Ohm (≤ ±1 V range)	2 Vrms	5 Vrms
Max input @ 1 MOhm (> ±1 V range)	n.a.	±30 V
Max input @ 1 MOhm (≤ ±1 V range)	n.a.	±5 V
Max DC voltage if AC coupling active	±30 V DC level	±30 V DC level
Relative input stage delay	0 ns	3.8 ns
Input ranges	±500 mV, ±1 V, ±2.5 V, ±5 V	±200 mV, ±500 mV, ±1 V, ±2 V, ±5 V, ±10 V
Offset Error after warm-up + calibration	≤0.1% of range	≤0.1% of range
Gain Error after warm-up + calibration	≤1.0% of range	≤0.1% of range

Trigger

Multiple Recording: re-arming time	≤ 32 Samples
Max Pretrigger at standard mode	up to full memsize
Max Pretrigger at Multi and FIFO	8192 Samples as sum of all active channels
Internal trigger accuracy	1 Sample
Channel trigger resolution	10 bits
Trigger output delay	134 sampling clock cycles (after trigger input)
External trigger type (Ext0)	Analog window comparator
Programmable trigger levels (Ext0)	2 levels +/- 5V in steps of 1 mV
Minimum trigger pulse width	≥ 2 clock periods
Ext. trigger connector (Ext0)	MMCX female
Ext. trigger max voltage 1 MOhm (Ext0)	±30 V
Ext. trigger max voltage 50 Ohm (Ext0)	5V rms
Ext. trigger impedance (Ext0)	50 Ohm / 1 MOhm 25 pF
External trigger accuracy (All)	1 Sample
Trigger output	see multi purpose I/O lines below

Power consumption (max speed)

	PCI / PCI-X		PCI EXPRESS	
	3,3 V	5 V	3,3 V	12 V
M3i.48x0 (128 MS memory)	1.9 A	2.3 A	0.4 A	1.7 A
M3i.48x1 (128 MS memory)	1.9 A	2.6 A	0.4 A	1.9 A
M3i.48x1 (2 GS memory), max. power	3.0 A	2.6 A	0.4 A	2.5 A

Max channels with Star-Hub

	SH4	SH8
M3i.48x0	4	8
M3i.48x1	8	16

BaseXIO (Option)

BaseXIO Connector (extra bracket)	8 x SMB male (8 x MMCX female internal)
BaseXIO input	TTL compatible: Low ≤ 0.8 V, High ≥ 2.0 V
BaseXIO input impedance	4.7 kOhm towards 3.3 V
BaseXIO input maximum voltage	-0.5 V up to +5.5 V
BaseXIO output levels	TTL compatible: Low ≤ 0.4 V, High ≥ 2.4 V
BaseXIO output drive strength	32 mA maximum current

Multi purpose digital I/O

No of multi purpose lines	two: (X0 = Ext1), (X1 = Ext2)
Connector Type	MMCX female
Input: available input signals	Additional TTL trigger, async input
Input: input impedance	10 kOhm towards 3.3 V
Input: maximum voltage	-0.3 V up to +5.5 V
Input: input voltage level	Low ≤ 0.8 V, High ≥ 2.0 V
Input: minimum pulse width	≥ 2 clock periods
Output: available output signals	trigger, overrange, arm, run, async output
Output: output impedance	50 Ohm
Output: output levels	Low ≤ 0.4 V, High ≥ 2.4 V
Output: output type	TTL compatible for high-impedance loads
Output: output drive strength	Capable of driving 50 Ohm load

Clock

Internal clock range	9 MHz to max (see table below)
Internal clock accuracy	max. ± 32 ppm
Internal clock setup granularity	1 Hz
Clock range gaps (internal and external)	none
External clock input connector/coupling	MMCX female, AC coupled
External clock input termination	50 Ohm fixed
Reference clock: external clock range	≥ 10.0 MHz and ≤ 1.0 GHz
Sampling clock from ref clock range	9 MHz to max (see table below)
Sampling clock from ref clock granularity	1 kHz
External clock delay to internal ADC clock	3.7 ns (8.2 ns at synchronized cards)
External clock input type	single-ended, sine wave or square wave
External clock min input swing	0.3 V peak peak
External clock maximum voltage	3.0 V peak peak
External clock duty cycle requirement	40% to 60%
External clock output connector/coupling	MMCX female, AC coupled
External clock output type	single-ended, 3.3V LVPECL
External clock output drive strength	Capable of driving 50 ohm load

Environmental and Physical details

Dimension (PCB only)	312 mm x 107 mm (full PCI length)
Width (Standard or star-hub 4)	1 full size slot
Width (star-hub 8)	2 full size slots
Width (with BaseXIO)	1 full size slots + 1 half size slot
Weight (plain card)	320 g
Weight (plain card + option SH4)	380 g
Weight (plain card + option SH8)	400 g
Warm up time	10 minutes
Operating temperature	0°C - 50°C
Storage temperature	-10°C - 70°C
Humidity	10% to 90%

PCI / PCI-X specific details

PCI / PCI-X bus slot type	32 bit 33/66 MHz
PCI / PCI-X bus slot compatibility	32/64 bit, 33-133 MHz, 3,3 and 5 V I/O

PCI EXPRESS specific details

PCIe slot type	x1
PCIe slot compatibility	x1/x4/x8/x16*

*Some x16 PCIe slots are for graphic cards only and can not be used for other cards.

Software programmable parameters

Input Ranges (Buffered path)	±200mV, ±500mV, ±1V, ±2V, ±5V, ±10V
Input Ranges (50 Ohm path)	±500mV, ±1V, ±2.5V, ±5V,
Analog input impedance	50 Ohm / 1M Ohm (Buffered path)
Analog input coupling	AC / DC
Analog bandwidth limit filter	on/off
Clock mode	Internal, external reference clock, sync
Trigger mode	Ch0, Ch1, Ext0(Analog), Ext1/2(TTL), SW
Enhanced trigger	Window, Re-Arm, Or/And, Delay
Trigger level (channel)	10 bit resolution relating to input range
Trigger level (Ext0)	1 mV resolution: -5000 mV to +5000 mV
Trigger edge (channel + external)	Rising edge, falling edge or both edges
Trigger delay	0 to 32G samples in steps of 8 samples
External trigger (Ext0) coupling	AC/DC
External trigger (Ext0) impedance	50 Ohm / 1M Ohm
Memory depth	16 up to [installed memory / number of active channels] in steps of 8
Posttrigger	8 up to 4 GSamples in steps of 8
Multiple Recording segment size	16 up to [installed memory / 2 / active channels] in steps of 16
Multiple Recording pretrigger	8 up to [8k samples / number of active channels]

Certifications, Compliances, Warranty

EMC Immunity	Compliant with CE Mark
EMC Emission	Compliant with CE Mark
Product warranty	2 years starting with the day of delivery
Software and firmware updates	Life-time, free of charge

Option SMA connectors

Available signals for SMA XA	One of Trig-In, Trig-Out, Multi Purpose X0
Available signals for SMA XB	One of Clk-In, Clk-Out, Trig-In

	M3i.4830	M3i.4831	M3i.4840	M3i.4841	M3i.4860	M3i.4861
max internal clock (1 channel active)	65 MS/s	65 MS/s	105 MS/s	105 MS/s	180 MS/s	180 MS/s
max internal clock (2 channels active)	n.a.	65 MS/s	n.a.	105 MS/s	n.a.	180 MS/s
lower bandwidth limit (DC coupling)	0 Hz	0 Hz	0 Hz	0 Hz	0 Hz	0 Hz
lower bandwidth limit (AC coupled, 50 Ohm)	<30 kHz	<30 kHz	<30 kHz	<30 kHz	<30 kHz	<30 kHz
lower bandwidth limit (AC coupled, 1 MOhm)	<2 Hz	<2 Hz	<2 Hz	<2 Hz	<2 Hz	<2 Hz
-3 dB bandwidth (buffered path)	30 MHz	30 MHz	45 MHz	45 MHz	70 MHz	70 MHz
-3 dB bandwidth (50 ohm path)	35 MHz	35 MHz	50 MHz	50 MHz	90 MHz	90 MHz
-3 dB bandwidth (BW limit enabled)	10 MHz	10 MHz	20 MHz	20 MHz	20 MHz	20 MHz

Dynamic Parameters

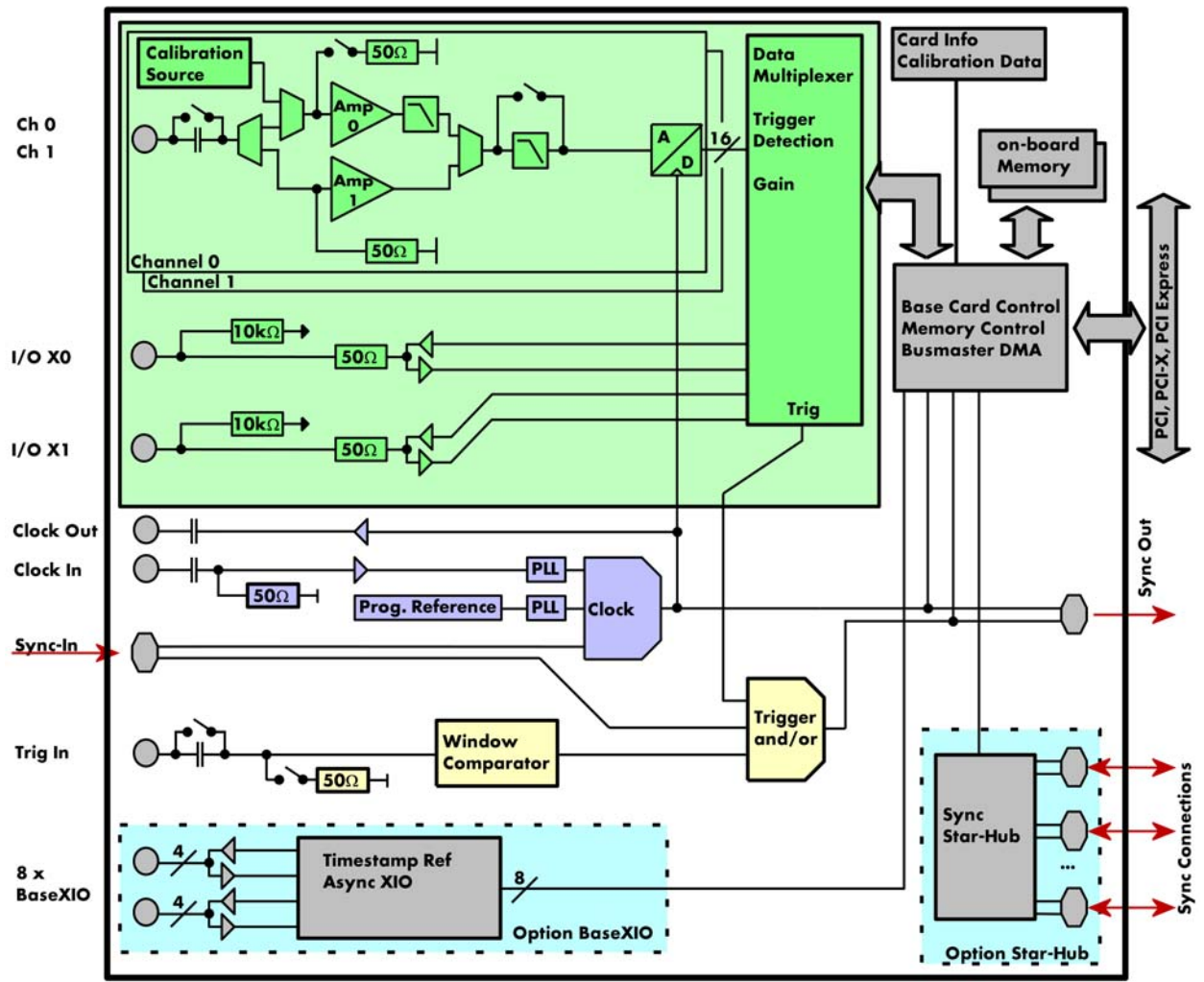
M3i.4861 and M3i.4860, 1 or 2 channels 180 MS/s										
Input Path	HF path, AC coupled, fixed 50 Ohm				Buffered path, BW limit			Buffered path, full BW		
Test signal frequency	1 MHz	10 MHz	40 MHz	10 MHz			1 MHz	10 MHz	40 MHz	
Input Range	±1V	±500mV	±1V	±1V	±200mV	±500mV	±1V	±500mV	±500mV	
RMS Noise (zero level)	≤ 8.0 LSB				≤ 10.0 LSB			≤ 10.0 LSB		
THD (typ) (dB)	-80.6	-79.2	-79.3	-77.8	-77.4	-77.7	-75.3	-83.4	-77.7	-47.8
SNR (typ) (dB)	73.1	73.3	73.4	71.9	71.4	72.8	73.1	71.1	72.8	68.6
SFDR (typ), excl. harm. (dB)	92.4	96.0	96.8	87.8	95.8	96.8	96.7	87.6	96.4	88.2
SFDR (typ), incl. harm. (dB)	81.1	80.5	80.5	78.8	79.0	78.7	76.2	85.2	79.0	48.0
SINAD/THD+N (typ) (dB)	72.4	72.3	72.3	70.9	70.4	71.6	73.1	70.9	71.6	47.8
ENOB based on SINAD (bit)	11.7	11.7	11.7	11.5	11.4	11.6	11.5	11.5	11.6	7.6
ENOB based on SNR (bit)	11.9	11.9	11.9	11.7	11.6	11.8	11.8	11.5	11.8	11.1

M3i.4841 and M3i.4840, 1 or 2 channels 105 MS/s									
Input Path	HF path, AC coupled, fixed 50 Ohm				Buffered path, BW limit			Buffered path, full BW	
Test signal frequency	1 MHz	10 MHz			10 MHz			1 MHz	10 MHz
Input Range	±1V	±500mV	±1V		±200mV	±500mV	±1V	±500mV	±500mV
RMS Noise (zero level)	≤ 7.0 LSB				≤ 10.0 LSB			≤ 10.0 LSB	
THD (typ) (dB)	-86.0	-87.3	-88.0		-83.0	-82.1	-76.2	-85.0	-79.8
SNR (typ) (dB)	74.5	74.7	74.7		71.7	73.9	74.2	73.1	73.0
SFDR (typ), excl. harm. (dB)	93.0	97.0	97.1		92.8	93.5	93.1	92.5	96.3
SFDR (typ), incl. harm. (dB)	86.5	91.5	91.7		85.3	85.1	79.0	87.5	81.5
SINAD/THD+N (typ) (dB)	74.2	74.5	74.5		71.4	73.3	72.1	72.8	72.2
ENOB based on SINAD (bit)	12.0	12.1	12.1		11.6	11.9	11.7	11.8	11.7
ENOB based on SNR (bit)	12.1	12.1	12.1		11.6	12.0	12.0	11.9	11.8

M3i.4831 and M3i.4830, 1 or 2 channels 65 MS/s									
Input Path	HF path, AC coupled, fixed 50 Ohm				Buffered path, BW limit			Buffered path, full BW	
Test signal frequency	1 MHz	10 MHz			10 MHz			1 MHz	10 MHz
Input Range	±1V	±500mV	±1V		±200mV	±500mV	±1V	±500mV	±500mV
RMS Noise (zero level)	≤ 5.0 LSB				≤ 9.0 LSB			≤ 9.0 LSB	
THD (typ) (dB)	-85.0	-86.2	-86.2		-83.5	-80.8	-76.5	-84.1	-80.4
SNR (typ) (dB)	75.0	75.4	75.2		72.3	74.6	74.8	73.8	74.2
SFDR (typ), excl. harm. (dB)	94.5	92.0	90.8		88.5	91.4	90.7	88.3	91.0
SFDR (typ), incl. harm. (dB)	81.5	87.7	87.5		84.7	83.3	78.8	85.2	81.5
SINAD/THD+N (typ) (dB)	74.6	75.1	74.9		72.0	73.7	72.6	73.4	73.4
ENOB based on SINAD (bit)	12.0	12.2	12.2		11.7	11.9	11.8	11.9	11.9
ENOB based on SNR (bit)	12.2	12.2	12.2		11.7	12.1	12.1	12.0	12.0

A pure sine wave with > 99% amplitude of input range is measured with 50 ohms termination. SNR and RMS noise parameters may differ depending on the quality of the used PC. SNR = Signal to Noise Ratio, THD = Total Harmonic Distortion, SFDR = Spurious Free Dynamic Range, SINAD = Signal Noise and Distortion, ENOB = Effective Number of Bits. Depending on the test signal frequency different filter types are used: 1 MHz signal = 7th order low pass, 10 MHz signal = 6th order band pass, 40 MHz signal = 6th order bandpass.

Hardware block diagram



Order Information

PCI/PCI-X

PCI Express

PCI/PCI-X	PCI Express	Standard mem	1 channel	2 channels
M3i.4830	M3i.4830-exp	128 MSample	65 MS/s	
M3i.4831	M3i.4831-exp	128 MSample	65 MS/s	65 MS/s
M3i.4840	M3i.4840-exp	128 MSample	105 MS/s	
M3i.4841	M3i.4841-exp	128 MSample	105 MS/s	105 MS/s
M3i.4860	M3i.4860-exp	128 MSample	180 MS/s	
M3i.4861	M3i.4861-exp	128 MSample	180 MS/s	180 MS/s

Memory

Order no.	Option
M3i.xxxx-256MS	Memory upgrade to 256 MSample (512 MB) total memory
M3i.xxxx-512MS	Memory upgrade to 512 MSample (1 GB) total memory
M3i.xxxx-1GS	Memory upgrade to 1 GSample (2 GB) total memory
M3i.xxxx-2GS	Memory upgrade to 2 GSample (4 GB) total memory

Options

Order no.	Option
M3i.xxxx-mr	Option Multiple Recording
M3i.xxxx-mt	Option pack including Multiple Recording, Timestamp
M3i.xxxx-mtab	Option pack including Multiple Recording, Timestamp, ABA mode
M3i.xxxx-SH4	Synchronization Star-Hub for up to 4 cards, only 1 slot width
M3i.xxxx-SH8	Synchronization Star-Hub for up to 8 cards, 2 slots width
M3i.xxxx-bxio	Option BaseXIO: 8 digital I/O lines usable as asynchronous I/O and timestamp ref-clock, additional bracket with 8 SMB connectors
M3i.xxxx-SMA	Option SMA connections for analog inputs + two signals of Clock-In, Clock-Out, Trig-In, Trig-Out, X0
M3i-upgrade	Upgrade for M3i.xxxx: later installation of option -bxio or SMA connectors

Cables

for Connections	Connection	Length	Order no.			
			to BNC male	to BNC female	to SMA male	to SMA female
Standard inputs	SMB female	80 cm	Cab-3f-9m-80	Cab-3f-9f-80	Cab-3f-3mA-80	Cab-3f-3fA-80
Standard inputs	SMB female	200 cm	Cab-3f-9m-200	Cab-3f-9f-200	Cab-3f-3mA-200	Cab-3f-3fA-200
Probes (short)	SMB female	5 cm		Cab-3f-9f-5		
Trigger/Clock/Extra	MMCX male	80 cm	Cab-1m-9m-80	Cab-1m-9f-80	Cab-1m-3mA-80	Cab-1m-3fA-80
Trigger/Clock/Extra	MMCX male	200 cm	Cab-1m-9m-200	Cab-1m-9f-200	Cab-1m-3mA-200	Cab-1m-3fA-200
SMA Option	SMA male	80 cm	Cab-3mA-9m-80	Cab-3mA-9f-80		
SMA Option	SMA male	200 cm	Cab-3mA-9m-200	Cab-3mA-9f-200		

Amplifiers

Order no.	Bandwidth	Input Impedance	Coupling	Amplification
SPA.1601 (2)	500 MHz	50 Ohm	DC	x10 (20 dB)
SPA.1412 (2)	200 MHz	1 MOhm	AC/DC	x10/x100 (20/40 dB)
SPA.1411 (2)	200 MHz	50 Ohm	AC/DC	x10/x100 (20/40 dB)
SPA.1232 (2)	10 MHz	1 MOhm	AC/DC	x100/x1000 (40/60 dB)
SPA.1231 (2)	10 MHz	50 Ohm	AC/DC	x100/x1000 (40/60 dB)
SPA.PW1-120 (2)	External power supply for all SPA amplifiers with 120 VAC, type A (US, Japan) connector			
SPA.PW1-230 (2)	External power supply for all SPA amplifiers with 230 VAC, type C (European) connector			
Information	External Amplifiers with one channel, BNC connections, manually adjustable offset, manually switch between settings. A power supply need to be ordered for each amplifier!			

Drivers

Order no.	Option
M3i.xxxx-ml	MATLAB driver for all M3i and M3i Express cards
M3i.xxxx-lv	LabVIEW driver for all M3i and M3i Express cards
M3i.48xx-vee	Agilent VEE driver for all M3i.48xx cards

SBench6

Order no.	Option
SBench6	Base version which support standard mode for one card
SBench6-Pro	Professional version for one card: FIFO mode, export/import, calculation functions
SBench6-Multi	Option multiple cards: needs Professional version. Handles multiple synchronized cards in one system.
Volume Licenses	Please ask Spectrum for details.

(1) : Just one of the options can be installed on a card at a time.

(2) : Third party product with warranty differing from our export conditions. No volume rebate possible.

Technical changes and printing errors possible